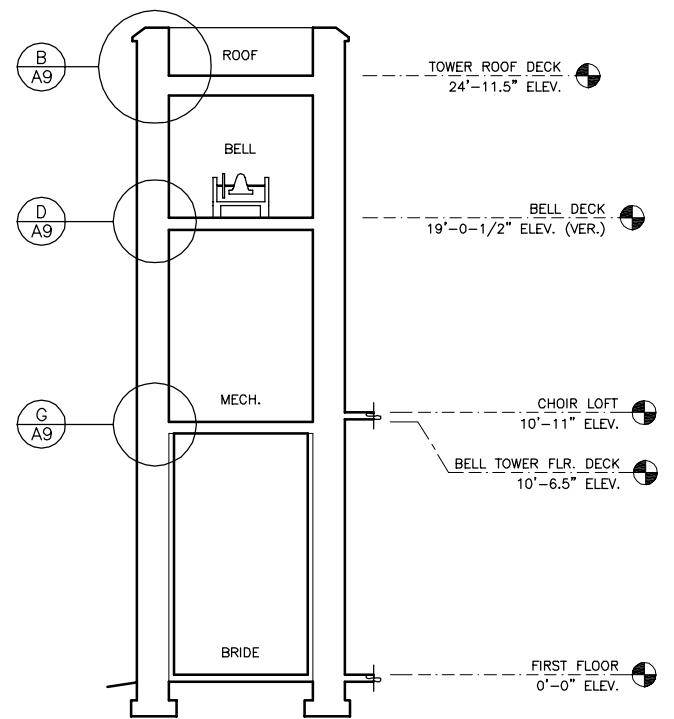
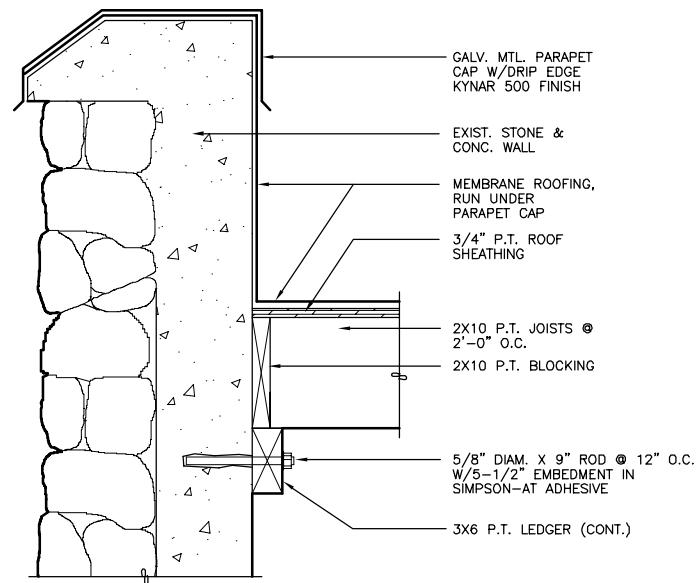




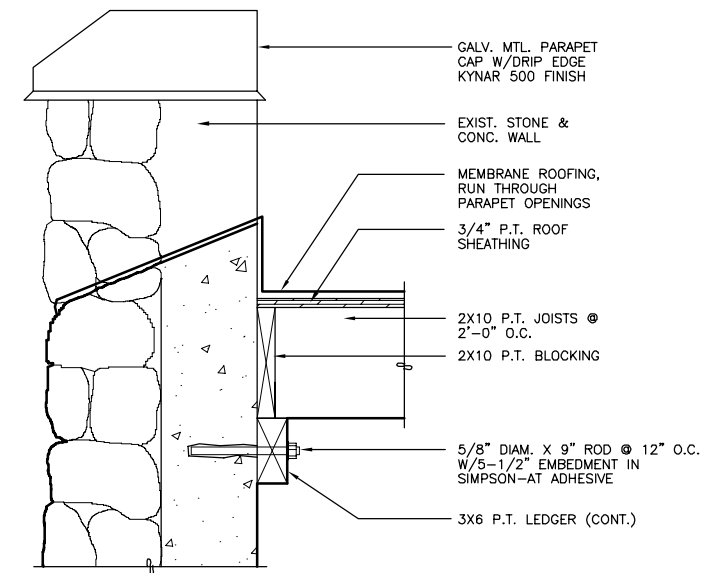
CBJ BLDG. Permit No. BLD2003-00762



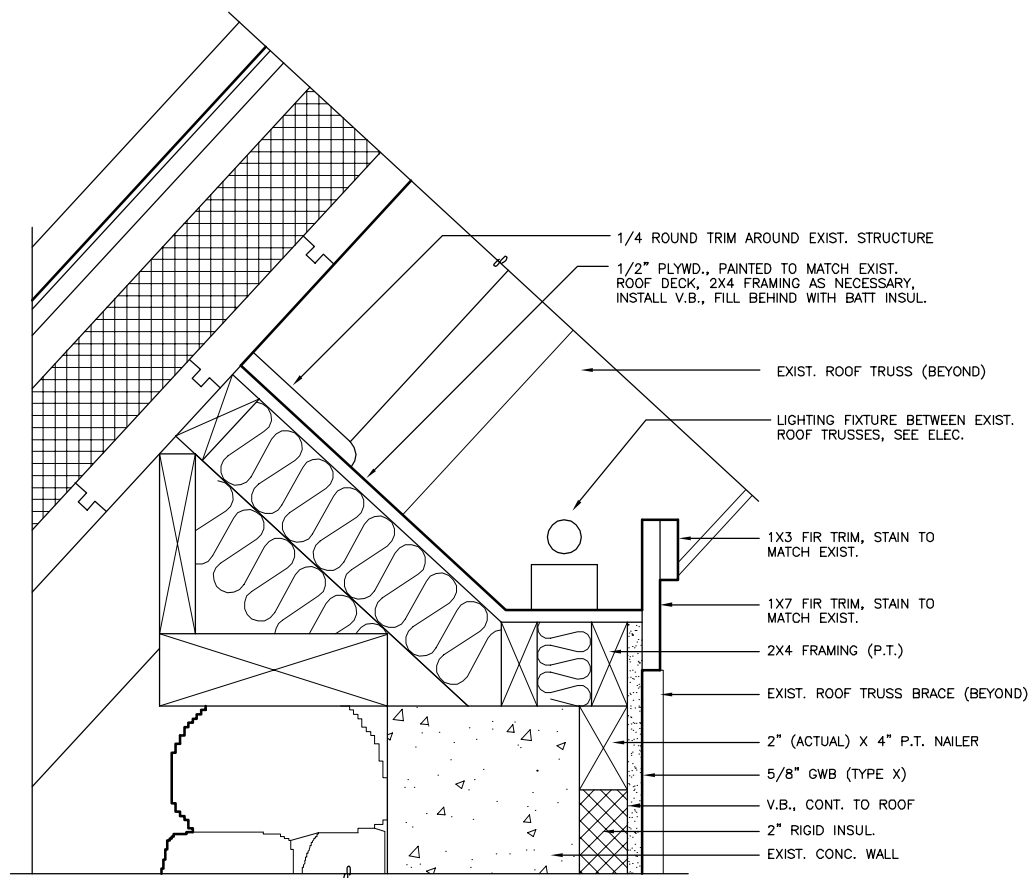
**(A) BELL TOWER SECTION**  
 Scale: 1/4" = 1'-0" D:\CAD\0302\DETAILS



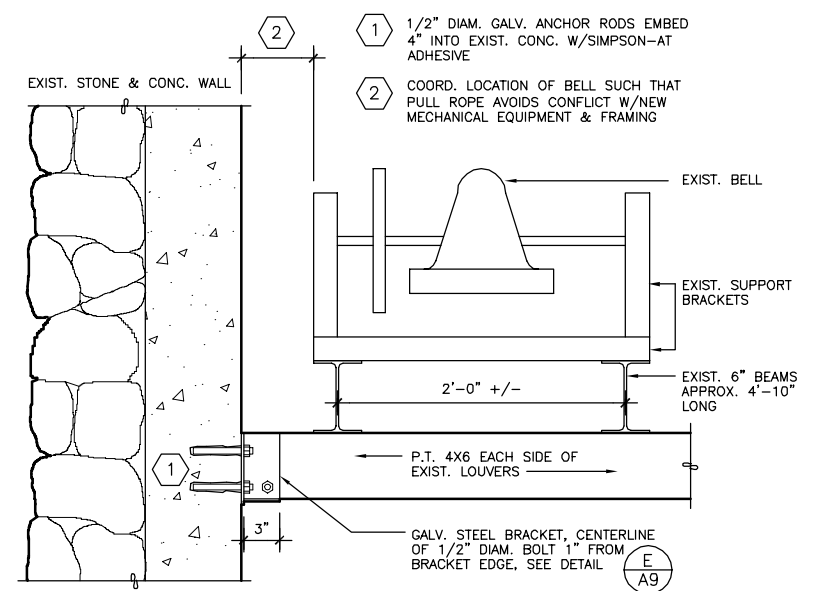
**(B) BELL TOWER ROOF/PARAPET DETAIL**  
 Scale: 1-1/2" = 1'-0" D:\CAD\0302\DETAILS



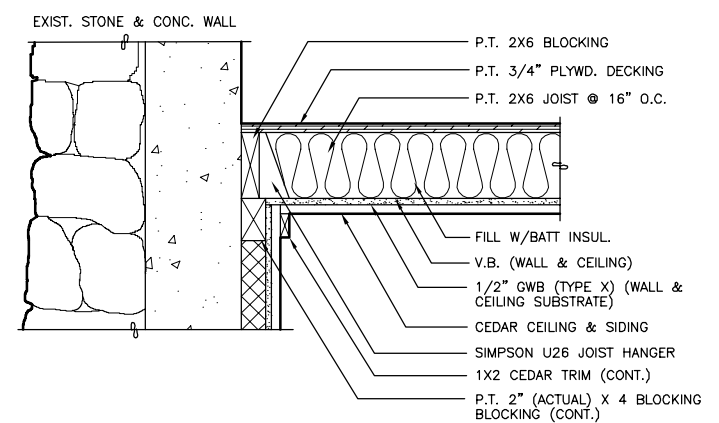
**(C) BELL TOWER ROOF/PARAPET DETAIL**  
 Scale: 1-1/2" = 1'-0" D:\CAD\0302\DETAILS



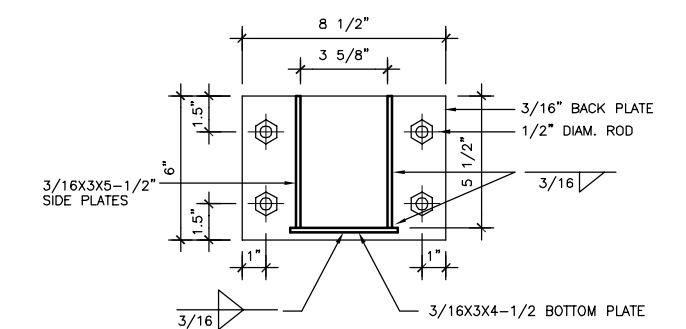
**(F) LIGHTING SOFFIT DETAIL**  
 Scale: 3" = 1'-0" D:\CAD\0302\DETAILS



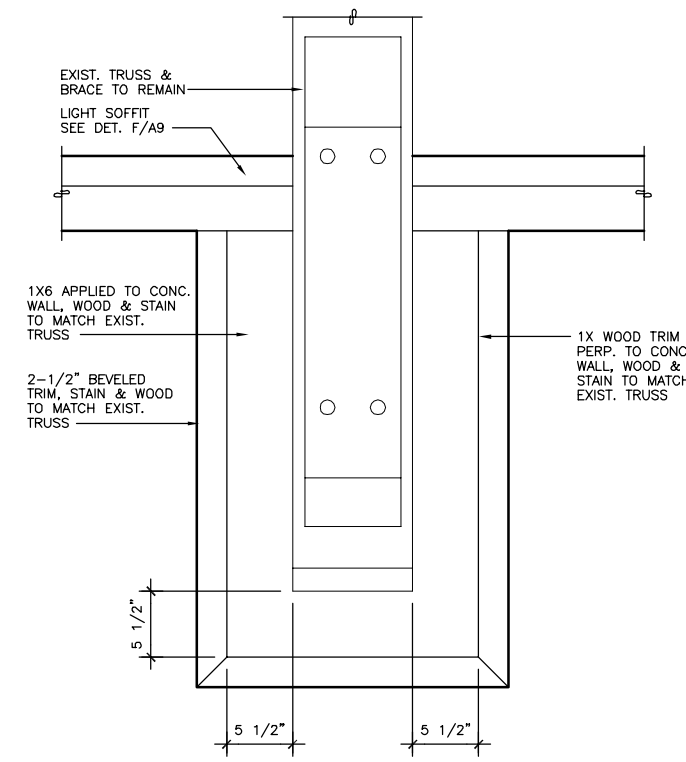
**(D) BELL STRUCTURAL CONNECTION DETAIL**  
 Scale: 1-1/2" = 1'-0" D:\CAD\0302\DETAILS



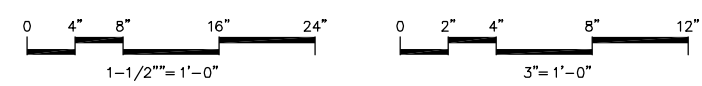
**(G) BELL TOWER FLOOR/CEILING DETAIL**  
 Scale: 1-1/2" = 1'-0" D:\CAD\0302\DETAILS



**(E) BRACKET DETAIL**  
 Scale: 3" = 1'-0" D:\CAD\0302\DETAILS



**(H) TRUSS POCKET DETAIL**  
 Scale: 1-1/2" = 1'-0" D:\CAD\0302\DETAILS



CONSTRUCTION DOCUMENTS  
**Shrine of St. Therese**  
**CHAPEL RENOVATION**  
 Catholic Diocese of Juneau  
 419 6th Street  
 Juneau, Alaska 99801

Number	Date	By	Description of Revisions

Sheet Title: **DETAILS**  
 Scale: AS SHOWN (11 X 17 = HALF SCALE)  
 Designed: AER Drawn: AER  
 Date: DEC. 15, 2003 Checked: AER  
 Approved By: AER Job Number: 0302